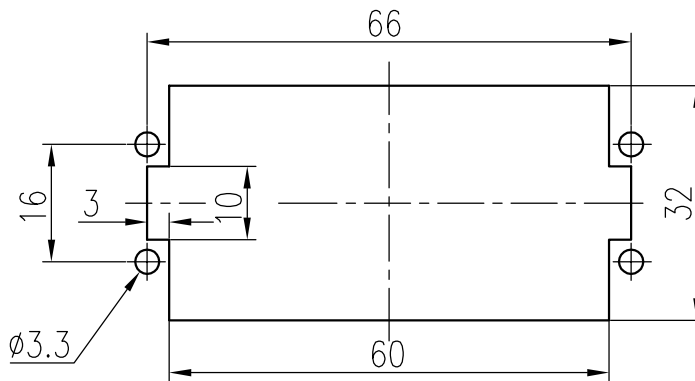
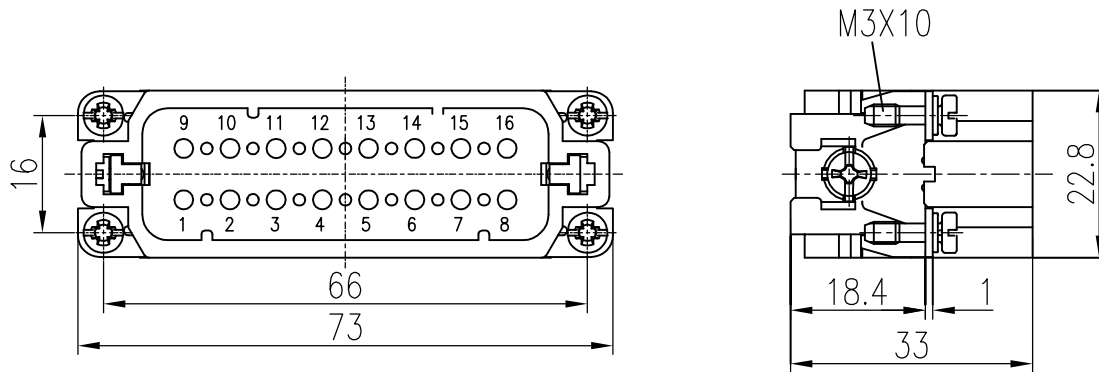
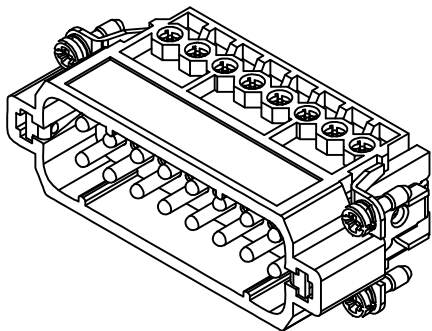


日期/Date  
 档案员  
 Filing Clerk



面板安装开孔图  
 Panel cut out



技术参数:

- 插芯:  
 - 插针数: 16+PE  
 - 额定电流: 16A  
 - 额定电压: 250V  
 - 额定脉冲电压: 4kV  
 - 污染等级: 3  
 - 依据UL/CSA的额定电压: 600V  
 - 绝缘阻抗:  $>10^{10}\Omega$   
 - 材料: 聚碳酸酯  
 - 颜色: RAL 7032 (浅灰色)  
 - 温度范围:  $-40^{\circ}\text{C} - +125^{\circ}\text{C}$   
 - 依据UL 94的阻燃等级: V0  
 - 可插拔次数:  $>500$
- 插针:  
 - 接线方式: 螺钉连接  
 - 材料: 铜合金  
 - 表面处理: 镀银  
 - 接触电阻:  $<1\text{m}\Omega$   
 - 线径范围:  $0.75-2.5\text{mm}^2(18-14\text{ AWG})$   
 - 拧紧/检测力矩:  $0.5\text{N}\cdot\text{m}$

Technical specification:

- Inserts:  
 - No. of contact: 16+PE  
 - Rated current: 16A  
 - Rated voltage: 250V  
 - Rated impulse voltage: 4kV  
 - Pollution degree: 3  
 - Rated voltage acc.to UL/CSA: 600V  
 - Insulation resistance:  $>10^{10}\Omega$   
 - Material: polycarbonate  
 - Colour: RAL 7032(light grey)  
 - Temperature range:  $-40^{\circ}\text{C} - +125^{\circ}\text{C}$   
 - Flammability acc.to UL 94: V0  
 - Mating cycles:  $>500$
- Contacts:  
 - Terminal: screw terminal  
 - Material: copper alloy  
 - Surface: hard-silver plated  
 - Contact resistance:  $<1\text{m}\Omega$   
 - Wire gauge:  $0.75-2.5\text{mm}^2(18-14\text{ AWG})$   
 - Tightening/Test torque:  $0.5\text{N}\cdot\text{m}$

|               |              |                  |            |                 |            |                |            |   |            |                   |   |
|---------------|--------------|------------------|------------|-----------------|------------|----------------|------------|---|------------|-------------------|---|
|               |              |                  |            |                 |            | 表面处理<br>Finish | -          |   |            | 图号<br>Drawing No. | -   |
|               |              |                  |            |                 |            | 材料<br>Material | -          |   |            | 产品代号<br>Part Code | HA-016-M                                    |
| 标记<br>Mark    | 处数<br>Number | 变更描述/Description |            | 签名<br>Signature | 日期<br>Date |                |            |   |            | 产品料号<br>Part No.  | 1210160110001                               |
| 绘图<br>Drawn   | BQ LUO       | 姓名/Name          | 日期/Date    | 姓名/Name         | 日期/Date    | 比例<br>Scale    | 版本<br>REV. | 重量<br>Weight                                  | 数量<br>Qty. | 产品名称<br>Part Name | -   |
| 审核<br>Checked | P RAO        | 标准化<br>Stand.    | 18.10.2010 | -               | -          | 1:1            | V1.0       | 62.8g   | -          |                   |   |
| 工艺<br>Process | -            | 批准<br>Approved   | -          | YY LIN          | 18.10.2010 |                |            | All Dimensions in mm<br>Original Size DIN A 4 |            |                   | 厦门唯恩电气有限公司<br>XIAMEN WAIN ELECTRICAL CO.LTD |